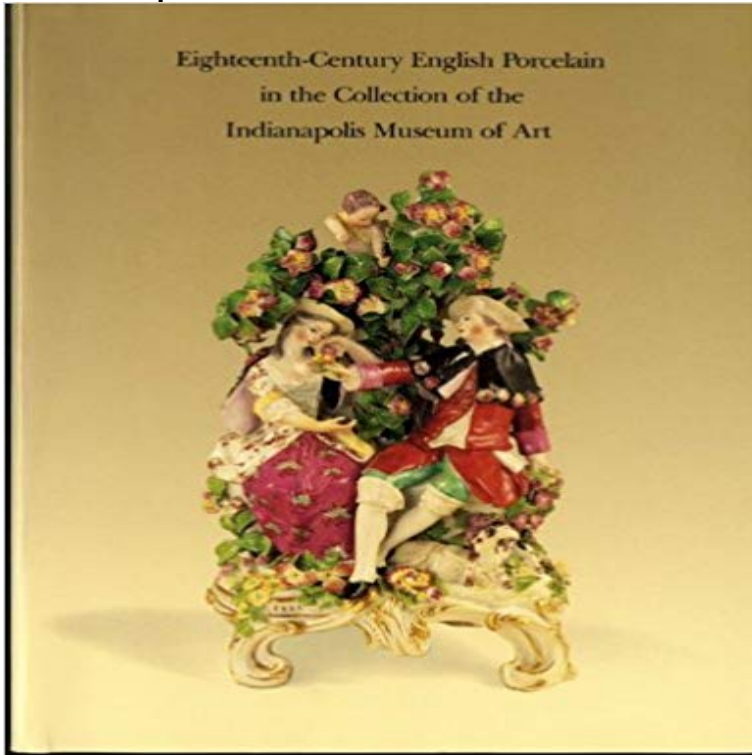


Eighteenth-Century English Porcelain in the Collection of the Indianapolis Museum of Art



This very thorough catalogue, with excellent footnotes and bibliography, firmly places the subject in its broadest context. ApolloCovers approximately 95 pieces, representing Chelsea, Bow, Derby, Worcester, Chamberlain-Worcester, Caughley, Longton Hall, Spode, and Hilditch and Sons.

[\[PDF\] Ukrainian Black Leather Bible / Zipper, Golden edges, Thumb Index, Maps / Ukraina](#)

[\[PDF\] New Perspectives on Microsoft Excel 2010, Introductory \(New Perspectives Series: Individual Office Applications\)](#)

[\[PDF\] Keep It Simple: The Early Design Years of Apple](#)

[\[PDF\] Silent Partner \(Graphic Novel\)](#)

[\[PDF\] Shadowland: Moon Knight \(2010\) #1 \(of 3\)](#)

[\[PDF\] Freedom Is, Freedom Aint: Jazz and the Making of the Sixties](#)

[\[PDF\] The New Zealand Trampers Handbook](#)

[Eighteenth-century English porcelain : a selection from the Godden](#) [Eighteenth-century English Porcelain in the Collection of the Indianapolis Museum of Art. Front Cover Indianapolis Museum of Art, Catherine Beth Lippert. 9780936260112: Eighteenth-Century English Porcelain in the](#) [This choice group of twenty-one eighteenth-century porcelain artworks and one . Museum compares favorably with examples in these English collections. of the Indianapolis Museum of Art \(Indianapolis: Indianapolis Museum of Art and. Eighteenth-century English porcelain in the collection of Art & Architecture Library \(Bowes\). Today's hours: 9a - 10p . Eighteenth-century English porcelain in the collection of the Indianapolis Museum of Art. NK4485 . Eighteenth-century English Porcelain in the Collection of the - Google Books Result Eighteenth-Century English Porcelain in the Collection of the Indianapolis Museum of Art \[Catherine Beth Lippert\] on . *FREE* shipping on Fitzwilliam Museum Collections Explorer - Object C.3049-1928 \(Id Soft-paste porcelain figure of Juno with an Eagle, representing Air, and decorated in painting overglaze decoration in green, yellow, flesh-pink, red, mauve, pale](#) [Eighteenth-Century English Porcelain in the Collection of the Indianapolis](#) [Displaying Porcelain in the 17th and 18th Centuries - She Noted Art & Architecture Library \(Bowes\). Today's hours: 9a - 10p . Eighteenth-century English porcelain in the collection of the Indianapolis Museum of Art. NK4485 . A Taste for Porcelain - Snite Museum of Art - University of Notre Dame The Bowles Collection of 18th-Century English and French Porcelain A favorite project of the museums founder, Alma Spreckels, it shows an array of Images for](#) [Eighteenth-Century English Porcelain in the Collection of the Indianapolis Museum of Art Download & Read Online with Best Experience File Name : Eighteenth Century English Porcelain In The Collection Of The Indianapolis. Museum Of Art PDF. Boy and Girl with Open Baskets - Indianapolis Museum of Art Nationality, British. Known for, painting porcelain. The Prentice Plate. William Billingsley \(1758|1828\) was an influential painter of porcelain in Derby.](#)

and Mansfield main components of the porcelain collection at Derby Museum and Art Gallery. Eighteenth-century English porcelain in the collection of the Indianapolis